

PORTIONS OF THE SOUTH HALF OF SECTION 32 AND THE SOUTH HALF OF SECTION 33, BOTH IN TOWNSHIP 13 SOUTH, RANGE 2 EAST, SAN BERNARDINO MERIDIAN, ALONG WITH PORTIONS OF THE NORTH HALF OF SECTION 4 AND NORTH HALF OF SECTION 5 IN TOWNSHIP 14 SOUTH, RANGE 2 EAST, SAN BERNARDINO MERIDIAN, ALL LYING WITHIN THE BOUNDARIES OF RANCHO CANADA DE SAN VICENTE Y MESA DEL PADRE BARONA, IN THE COUNTY OF SAN DIEGO, STATE OF CALIFORNIA, AS SHOWN ON THE MAP OF THE SUBDIVISION OF SAID RANCHO IN ACCORDANCE WITH THE UNITED STATES SYSTEM OF PUBLIC LAND SURVEYS MADE BY VITUS WACHENRUEDER IN DECEMBER OF 1869, BEING MAP NO. 858, FILED IN THE OFFICE OF THE COUNTY RECORDER OF SAN DIEGO COUNTY ON APRIL 29, 1899 PER DEED DOCUMENT NO'S. 2018-0157658, 2018-0157659, 2018-0157660, AND 2018-0157661, RECORDED ON APRIL 20, 2018.

**LEGEND**

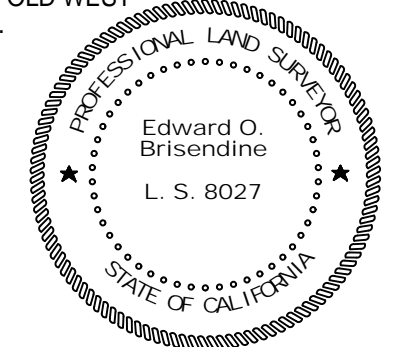
- = FOUND MONUMENTS AS NOTED AND IN MONUMENT TABLE
- = SET 3/4" X 18" IRON PIPE WITH PLUG STAMPED "LS 8027".
- ⊕ = SET 1/2" X 18" REBAR WITH CAP STAMPED "LS 8027" IN ASPHALT
- ◇ = SET LEAD & DISC STAMPED "LS 8027" IN ROCK
- ( ) = RECORD DATA PER MAP 16045
- { } = RECORD DATA PER ROS 8979
- < > = RECORD DATA PER MAP 13633
- (( )) = RECORD DATE PER MAP 13672
- {{ }} = RECORD DATA PER PM 16949
- << >> = RECORD DATA PER ROS 8193
- [ ] = RECORD DATA PER DEEDS AS NOTED

**BASIS OF BEARINGS**

THE SOUTHERLY LINE OF MAP 7980  
I.E. N 89° 17' 56" E

**SURVEYOR'S STATEMENT**

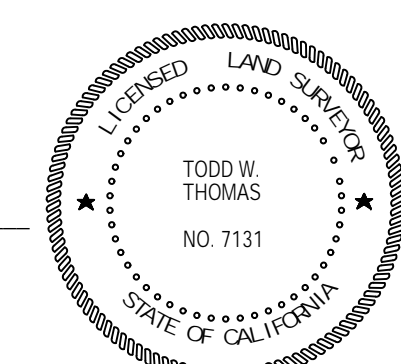
THIS MAP CORRECTLY REPRESENTS A SURVEY MADE BY ME OR UNDER MY DIRECTION IN CONFORMANCE WITH THE REQUIREMENTS OF THE PROFESSIONAL LAND SURVEYOR'S ACT AT THE REQUEST OF OLD WEST RANCH CA PARTNERS LLC IN MAY 2018.



EDWARD O. BRISENDINE, PLS 8027 DATE \_\_\_\_\_

**COUNTY SURVEYOR'S STATEMENT**

THIS MAP HAS BEEN EXAMINED IN ACCORDANCE WITH SECTION 8766 OF THE PROFESSIONAL LAND SURVEYOR'S ACT THIS \_\_\_\_\_ DAY OF \_\_\_\_\_, 2018



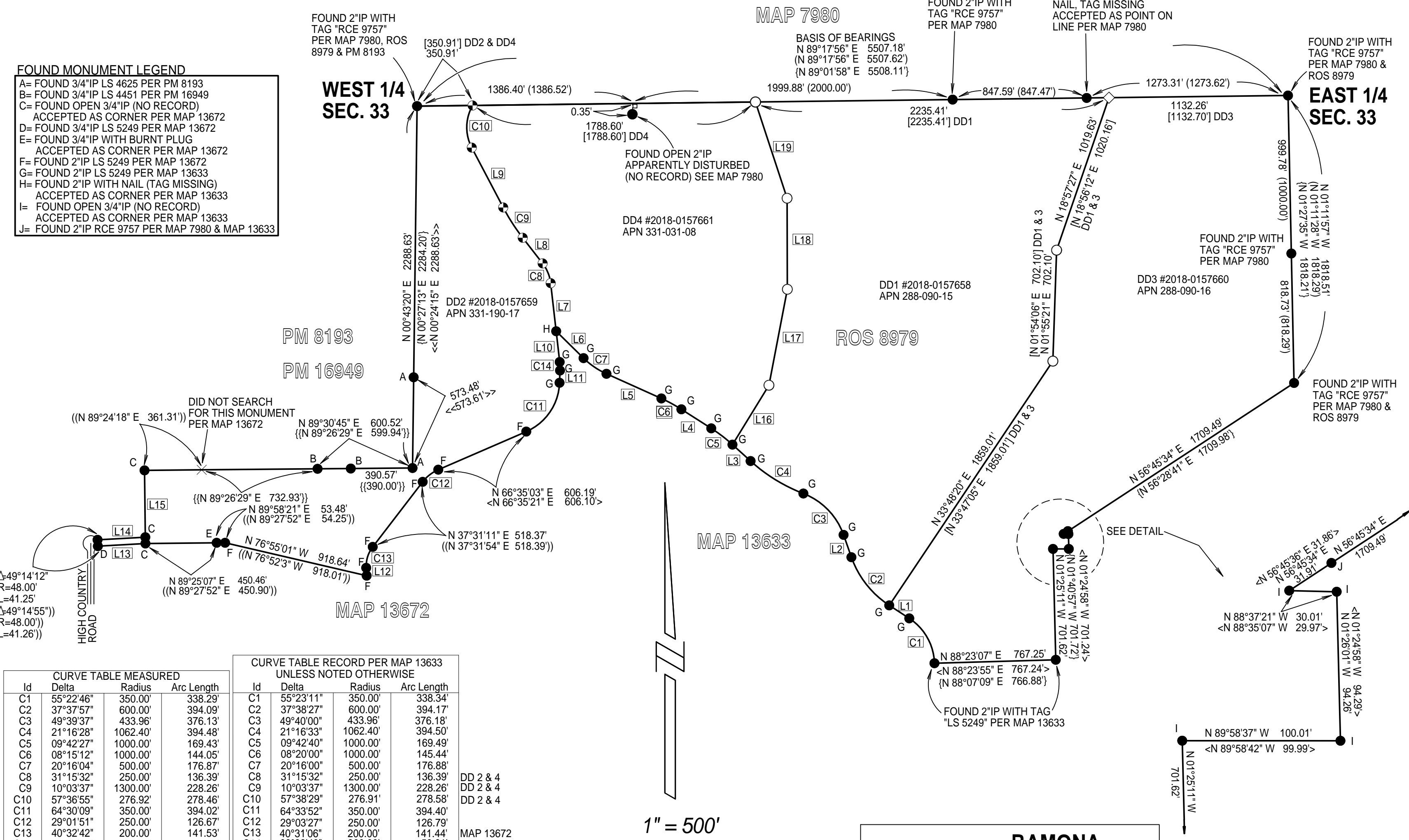
TODD W. THOMAS, P.L.S. NO. 7131 FOR THE COUNTY SURVEYOR

**RECORDER'S STATEMENT**

FILE NO. \_\_\_\_\_ DAY OF \_\_\_\_\_, 2018, AT \_\_\_\_\_ O'CLOCK \_\_\_\_\_ M, IN BOOK OF RECORD OF SURVEY MAPS AT PAGE \_\_\_\_\_ AT THE REQUEST OF EDWARD O. BRISENDINE.

ERNEST J. DRONENBURG, JR COUNTY RECORDER/CLERK

FEE: \_\_\_\_\_ BY: \_\_\_\_\_ DEPUTY COUNTY RECORDER

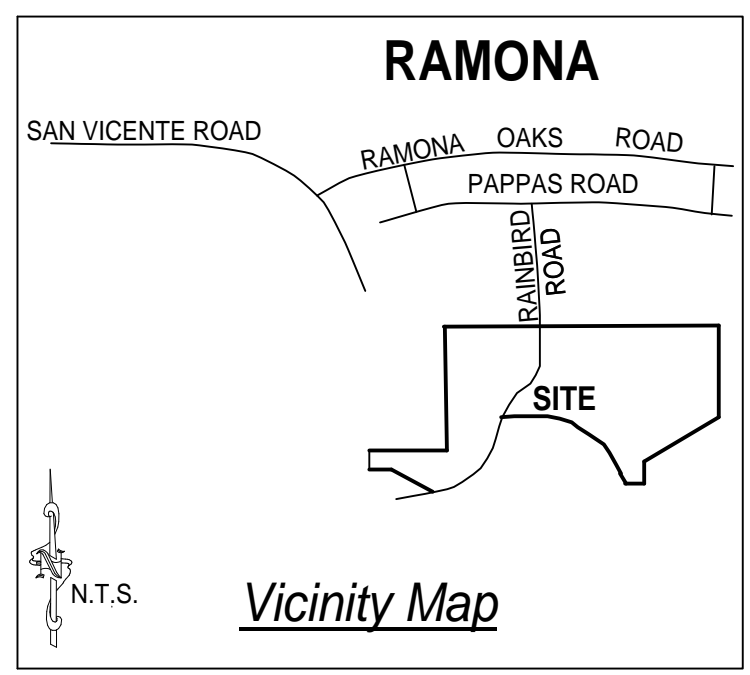


**FOUND MONUMENT LEGEND**  
 A= FOUND 3/4" IP LS 4625 PER PM 8193  
 B= FOUND 3/4" IP LS 4451 PER PM 16949  
 C= FOUND OPEN 3/4" IP (NO RECORD)  
 D= FOUND 3/4" IP LS 5249 PER MAP 13672  
 E= FOUND 3/4" IP WITH BURNT PLUG  
 ACCEPTED AS CORNER PER MAP 13672  
 F= FOUND 2" IP LS 5249 PER MAP 13672  
 G= FOUND 2" IP LS 5249 PER MAP 13633  
 H= FOUND 2" IP WITH NAIL (TAG MISSING)  
 ACCEPTED AS CORNER PER MAP 13633  
 I= FOUND OPEN 3/4" IP (NO RECORD)  
 ACCEPTED AS CORNER PER MAP 13633  
 J= FOUND 2" IP RCE 9757 PER MAP 7980 & MAP 13633

CURVE TABLE MEASURED				CURVE TABLE RECORD PER MAP 13633 UNLESS NOTED OTHERWISE			
Id	Delta	Radius	Arc Length	Id	Delta	Radius	Arc Length
C1	55°22'46"	350.00'	338.29'	C1	55°23'11"	350.00'	338.34'
C2	37°37'57"	600.00'	394.09'	C2	37°38'27"	600.00'	394.17'
C3	49°39'37"	433.96'	376.13'	C3	49°40'00"	433.96'	376.18'
C4	21°16'28"	1062.40'	394.48'	C4	21°16'33"	1062.40'	394.50'
C5	09°42'27"	1000.00'	169.43'	C5	09°42'40"	1000.00'	169.49'
C6	08°15'12"	1000.00'	144.05'	C6	08°20'00"	1000.00'	145.44'
C7	20°16'04"	500.00'	176.87'	C7	20°16'00"	500.00'	176.88'
C8	31°15'32"	250.00'	136.39'	C8	31°15'32"	250.00'	136.39'
C9	10°03'37"	1300.00'	228.26'	C9	10°03'37"	1300.00'	228.26'
C10	57°36'55"	276.92'	278.46'	C10	57°38'29"	276.91'	278.58'
C11	64°30'09"	350.00'	394.02'	C11	64°33'52"	350.00'	394.40'
C12	29°01'51"	250.00'	126.67'	C12	29°03'27"	250.00'	126.79'
C13	40°32'42"	200.00'	141.53'	C13	40°31'06"	200.00'	141.44'
C14	08°34'07"	360.00'	53.84'	C14	08°33'49"	360.00'	53.81'

LINE TABLE MEASURED			LINE TABLE RECORD PER MAP 13633 UNLESS NOTED OTHERWISE		
Id	Bearing	Distance	Id	Bearing	Distance
L1	N 56°59'14" W	151.01'	L1	N 56°59'16" W	151.02'
L2	N 19°21'53" W	150.03'	L2	N 19°20'49" W	150.00'
L3	N 47°46'42" W	154.56'	L3	N 47°44'16" W	154.65'
L4	N 57°29'17" W	223.67'	L4	N 57°26'56" W	223.64'
L5	N 65°48'02" W	380.52'	L5	N 65°46'56" W	379.24'
L6	N 45°30'19" W	242.44'	L6	N 45°30'56" W	242.48'
L7	N 06°32'16" W	306.12'	L7	N 06°32'24" W	306.12'
L8	N 37°47'48" W	205.12'	L8	N 37°47'48" W	205.12'
L9	N 27°44'11" W	427.46'	L9	N 27°44'11" W	427.46'
L10	N 06°30'27" W	195.85'	L10	N 06°32'20" E	195.91'
L11	N 02°11'46" E	77.82'	L11	N 02°01'29" E	77.73'
L12	N 02°57'24" W	49.79'	L12	N 02°59'12" W	50.00'
L13	N 86°50'41" E	301.28'	L13	N 86°52'45" E	301.33'
L14	N 86°52'55" E	302.61'	L14	N 86°52'45" E	302.64'
L15	N 00°38'37" W	422.84'	L15	N 00°35'42" W	422.67'

LINE TABLE MEASURED			LINE TABLE RECORD DD1 & 4		
Id	Bearing	Distance	Id	Bearing	Distance
L16	N 31°33'25" E	440.59'	L16	N 31°32'38" E	440.65'
L17	N 10°50'52" E	618.00'	L17	N 10°50'05" E	618.00'
L18	N 00°10'11" W	575.85'	L18	N 00°10'58" W	575.85'
L19	N 18°11'18" W	640.46'	L19	N 18°12'05" W	640.46'



1" = 500'